



**SEEDS**  
Sentinel EO-based Emission  
and Deposition Service



# NO<sub>x</sub> soil products and NH<sub>3</sub> emissions

Jieying Ding, Ronald van der A, Henk Eskes

KNMI

March 2022



Koninklijk Nederlands  
Meteorologisch Instituut  
Ministerie van Infrastructuur en Waters



 **CERFACS**  
CENTRE EUROPÉEN DE RECHERCHE ET DE FORMATION AVANCÉE EN CALCUL SCIENTIFIQUE



**isardSAT**  
**lobelia.**



## Emission estimation method:

**Inversion technique using satellite observations and a chemical transport model:**

DECISO (see presentation from Ronald van der A)



## Products:

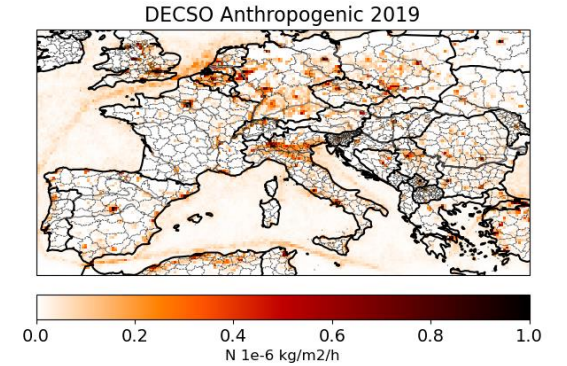
### **NO<sub>x</sub> emissions per category**

- Anthropogenic emissions: land and ocean
- Soil emissions from agriculture and forest

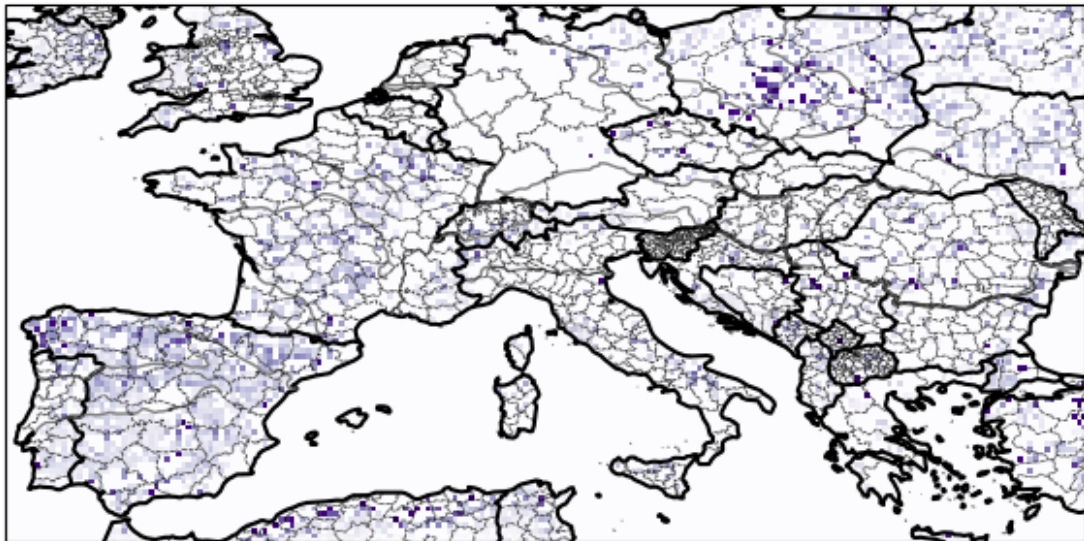
**NH<sub>3</sub> emissions from CRIS**

# European NOx emissions per sector

- Split-up in sectors based on land-use data-base and seasonal cycle.

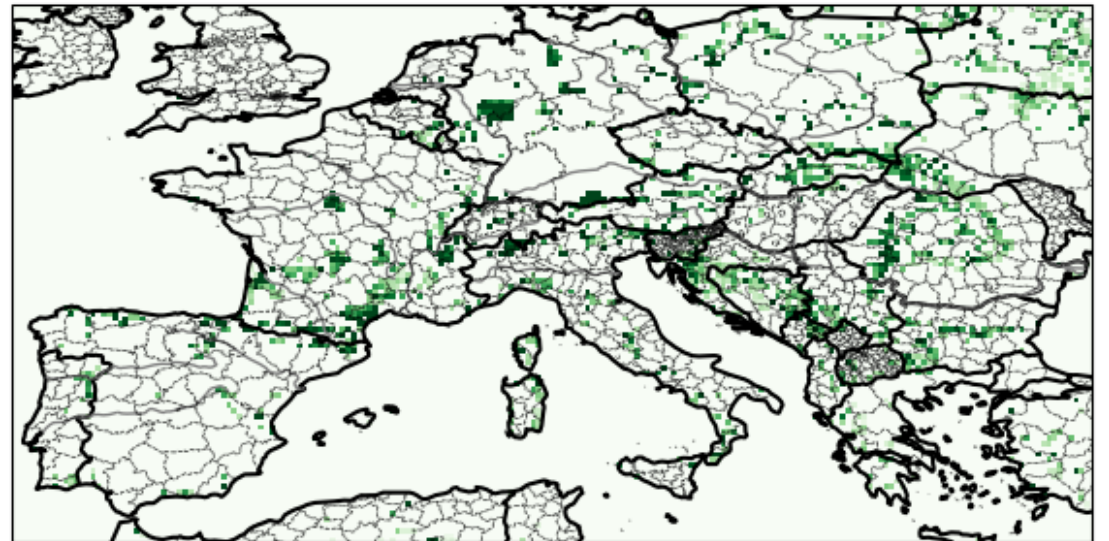


DECSO Agricultural 2019

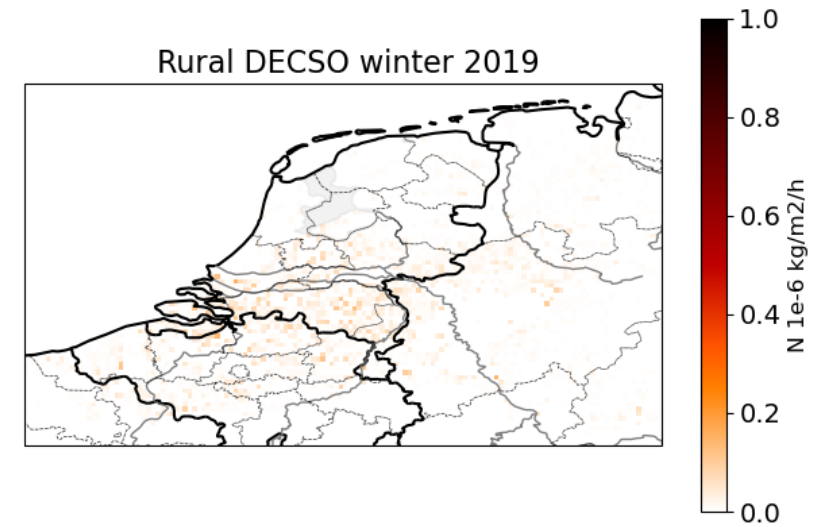
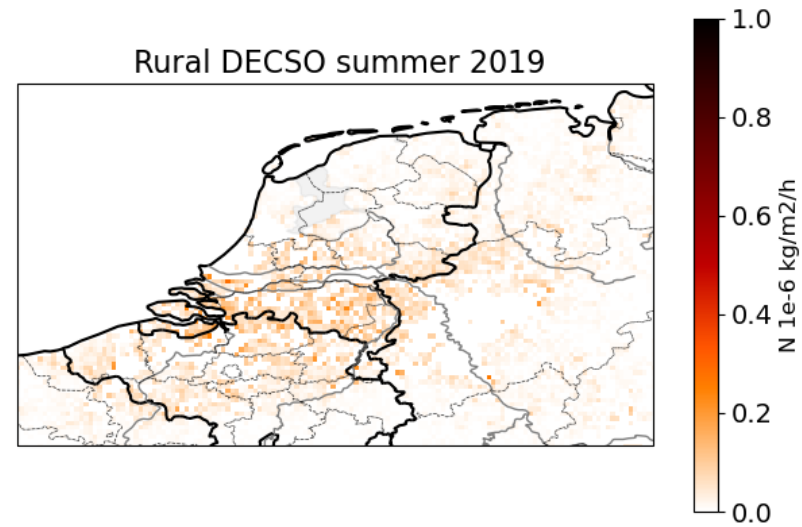
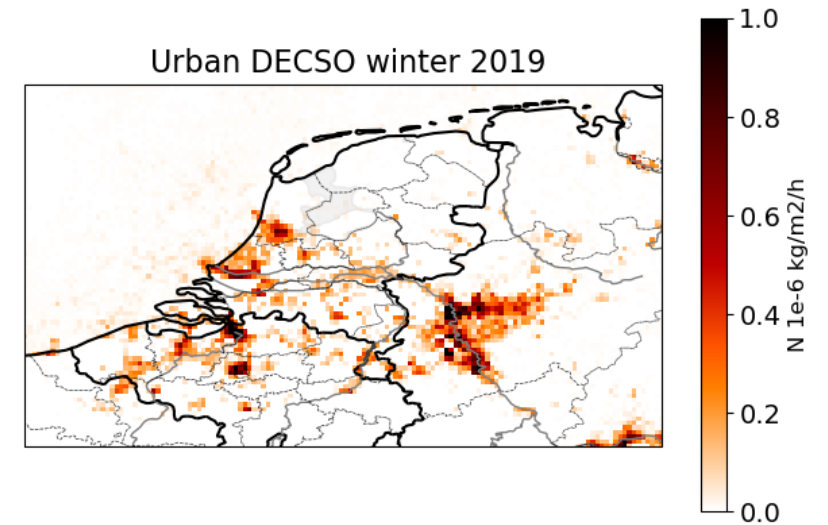
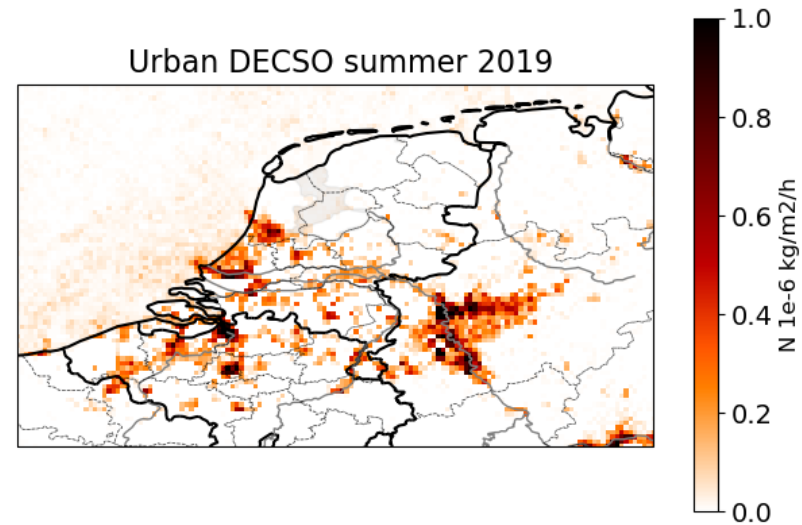


0.02 0.04 0.06 0.08 0.10  
N 1e-6 kg/m2/h

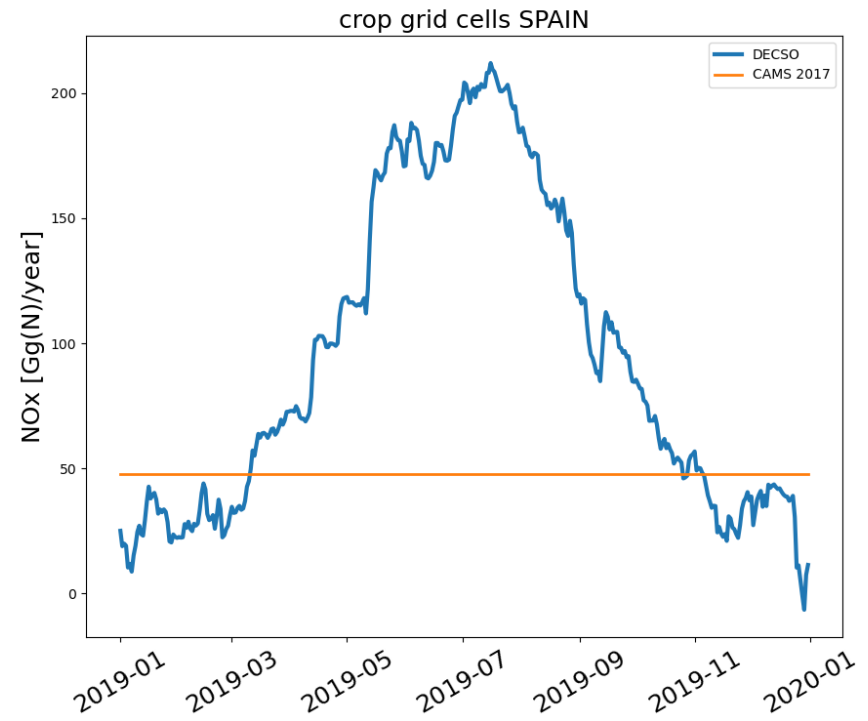
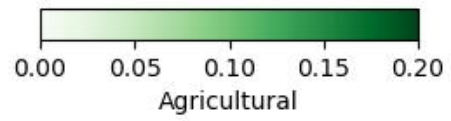
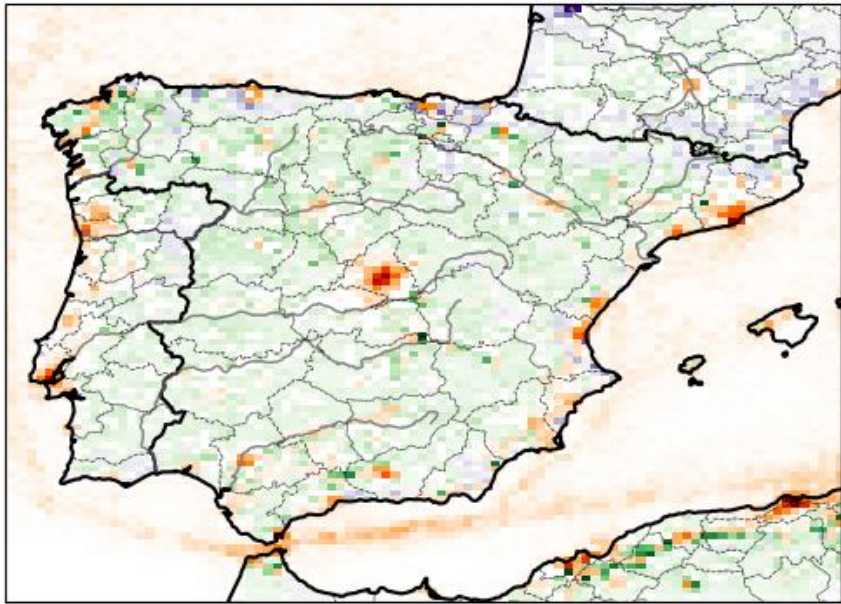
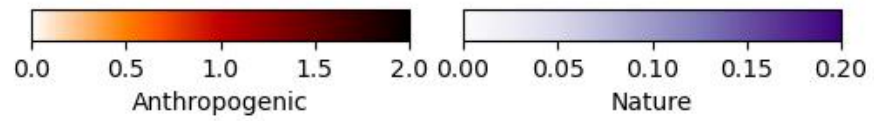
DECSO Forest 2019



0.00 0.01 0.02 0.03 0.04 0.05  
N 1e-6 kg/m2/h

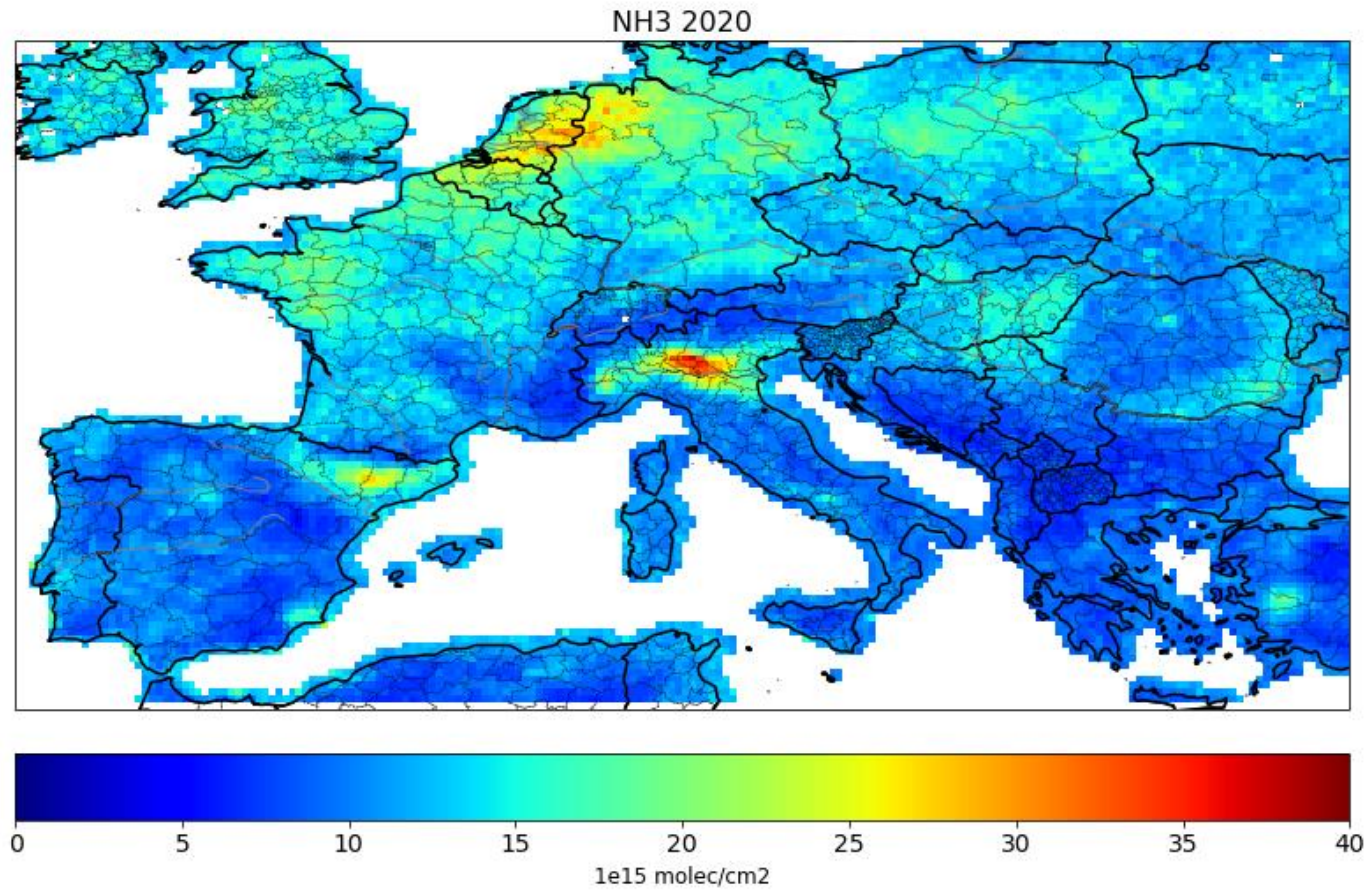


Spatial resolution: 0.05 degree



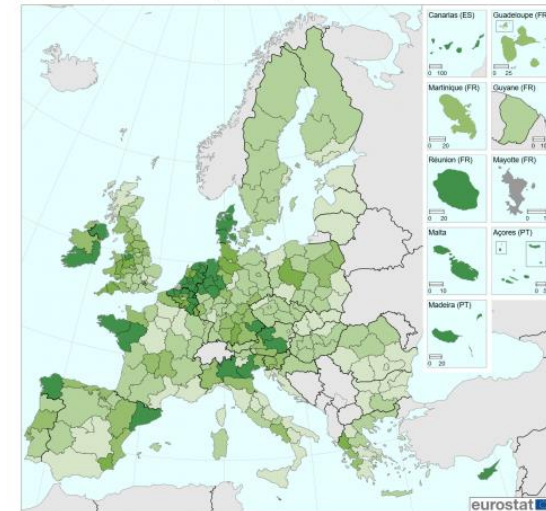
# NH<sub>3</sub> Satellite observation

NH<sub>3</sub> observed from CrIS in 2020

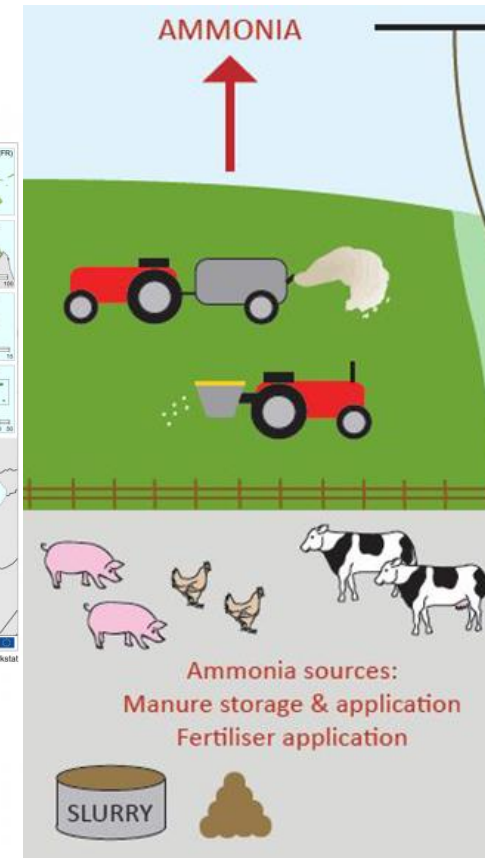


Livestock density

Map 1: Livestock density by NUTS 2 regions, EU-28, 2016  
(Livestock units per hectare of utilised agricultural area)

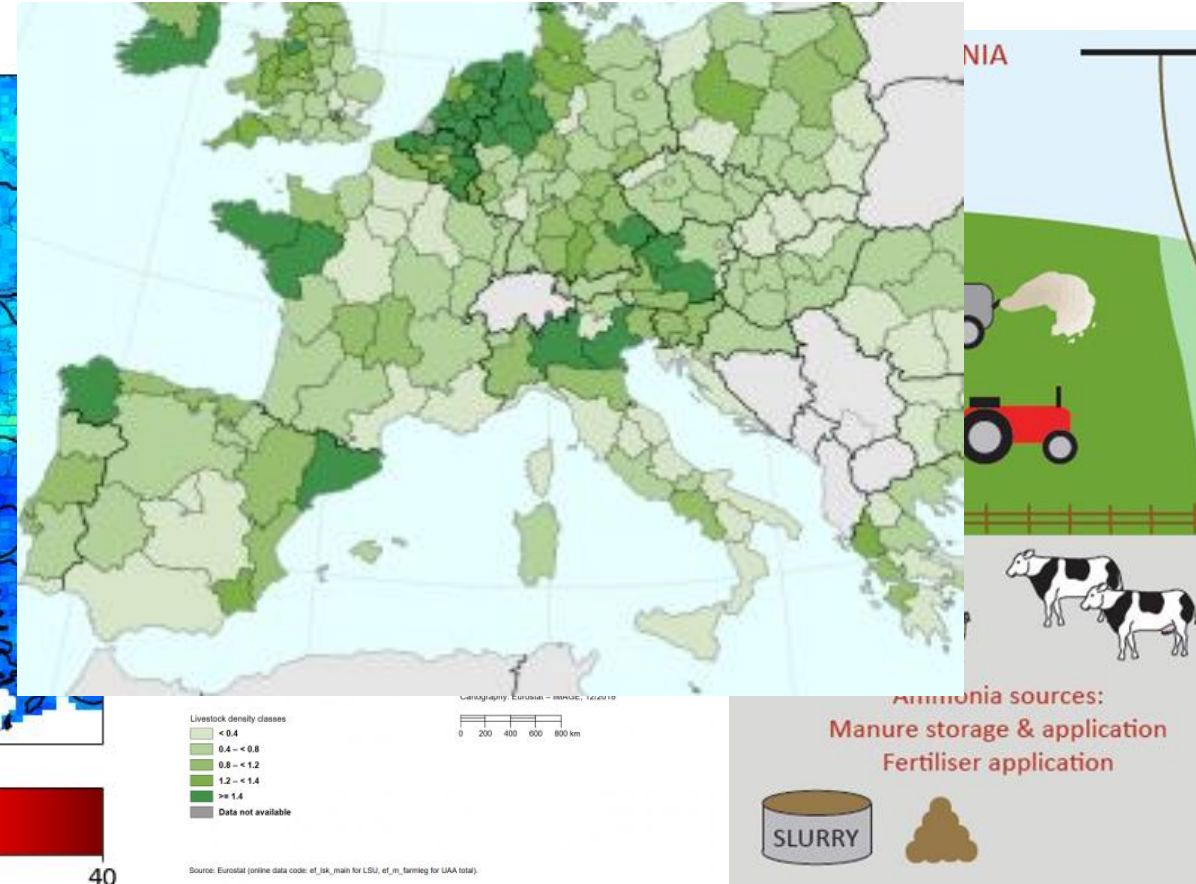
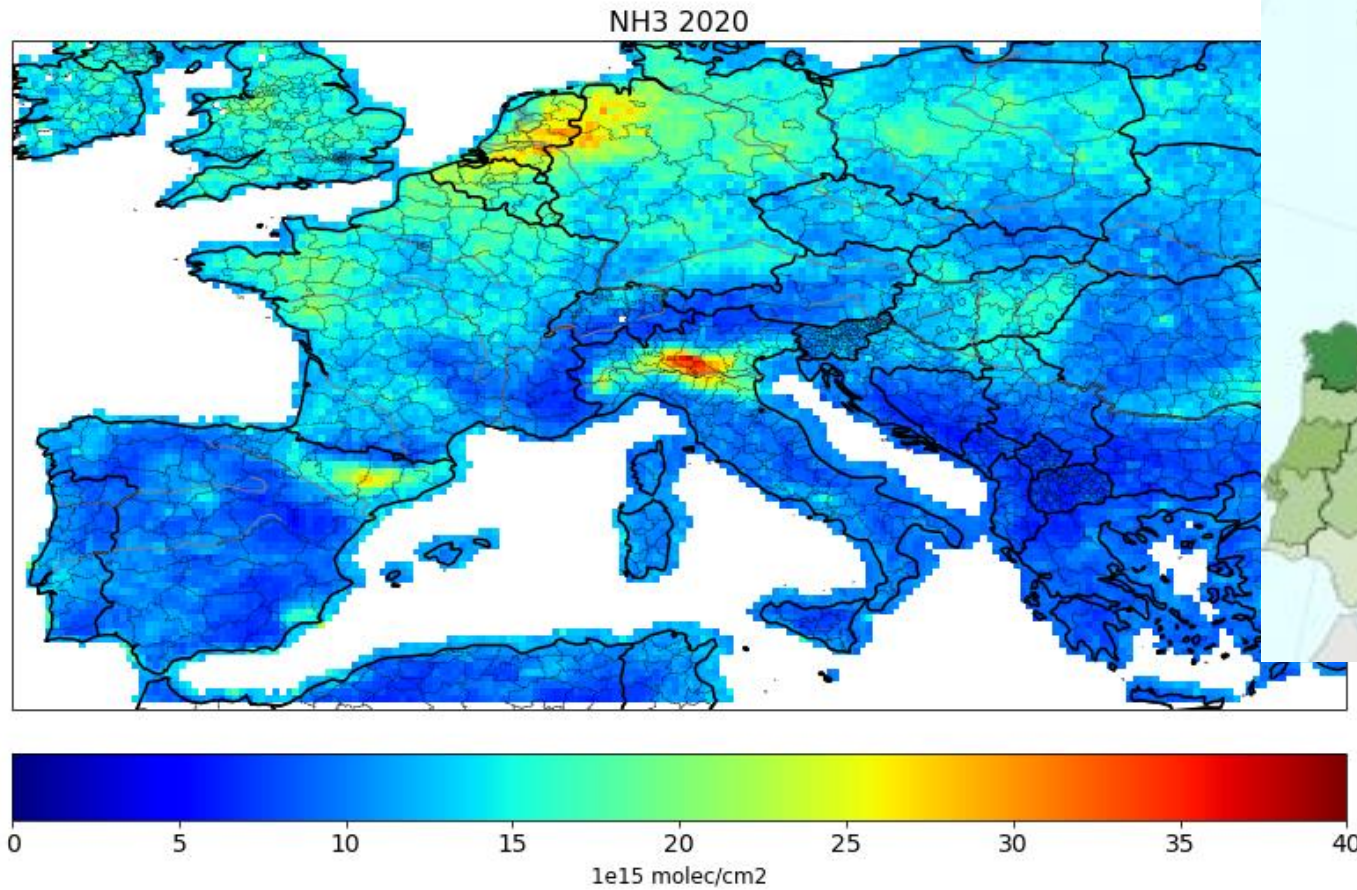


Sources of NH<sub>3</sub>

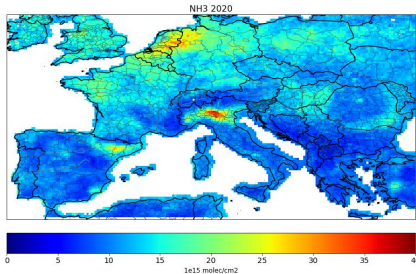


# NH<sub>3</sub> Satellite observation

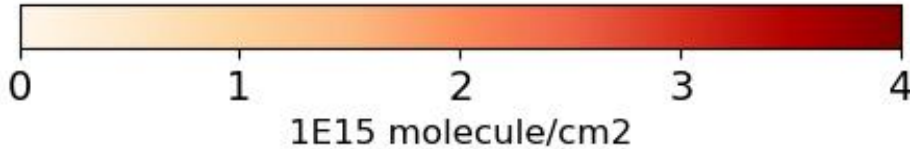
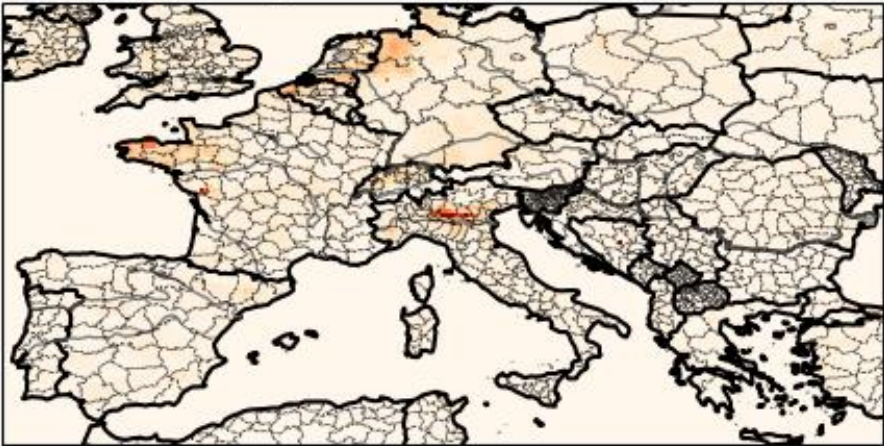
NH<sub>3</sub> observed from CrIS in 2020



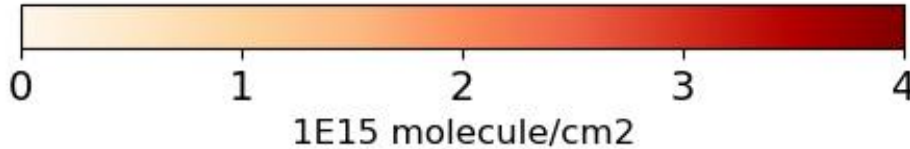
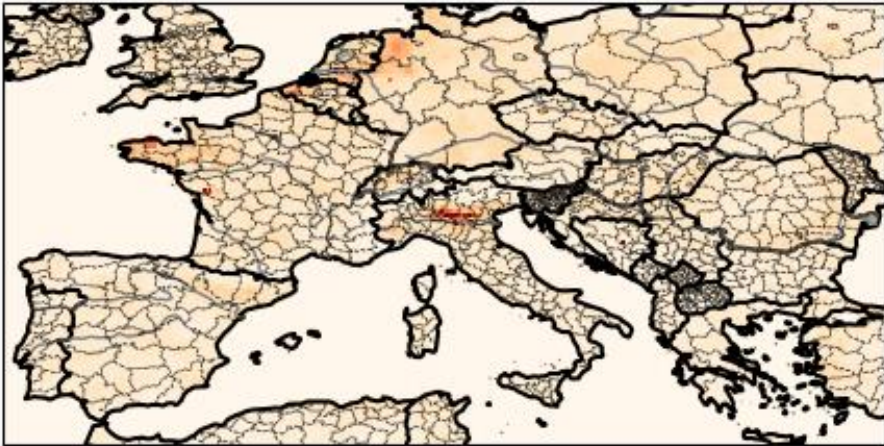
# Preliminary results: NH<sub>3</sub> emissions



Apriori NH<sub>3</sub> HTAP



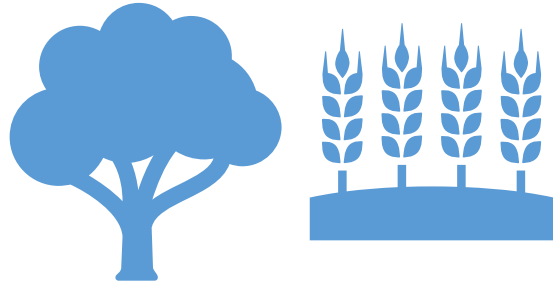
Estimated NH<sub>3</sub> 20200901 DECSO







**SEEDS**  
Sentinel EO-based Emission  
and Deposition Service



## **NOx emissions per category**

Anthropogenic emissions: land and ocean  
Soil emissions from agriculture and forest



## **NH3 emissions from CRIS**



Funded by  
the European Union